

Caledonia Business Park

Village of Caledonia

Racine County
Map Location:
H

Location: Village of Caledonia, three miles east of Interstate 94 at the intersection of Nicholson Road and Dunkelow Road.

Owner: Majestic North Corporation

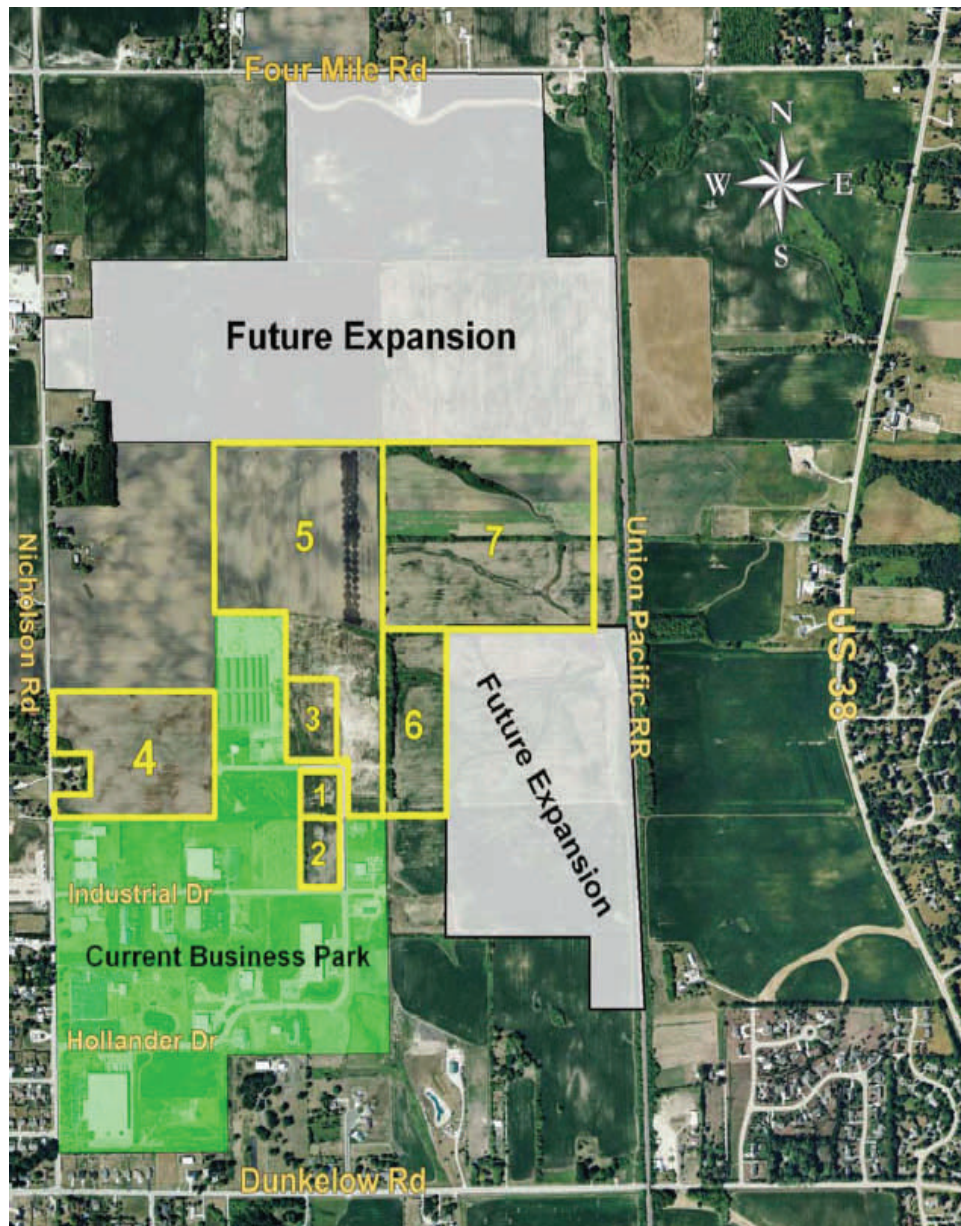
Developer: Majestic North Corporation

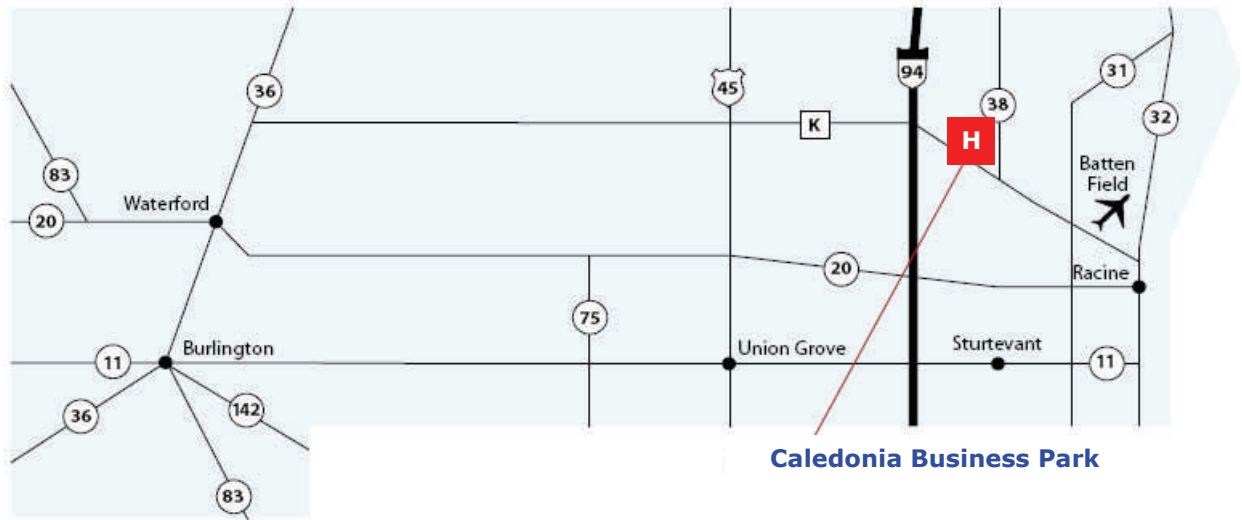
Zoning: M-2

Covenants: Industrial park deed restrictions (or zoning ordinances) designed to protect your investment.

Price: \$44,900 per acre improved (parcels 1-4) or \$15,000 per acre unimproved (parcels 5-7).

Financing: Low, fixed-rate land financing available. Local, State and Federal financing programs available for fixed-asset and working capital from the Racine County Economic Development Corporation, 262-898-7400.





Caledonia Business Park

Transportation

Highways: Located three miles east of Interstate 94 at the intersection of Nicholson Road and Dunkelow Road. Less than 1 mile west of Highway 38, less than one mile south of Four Mile Road and less than 1 mile north of Highway K.

Trucking: Racine County includes 95 warehouse and trucking establishments. Parcel service is available.

Air: Racine County is served by three general aviation airports: John H. Batten Field, Burlington Municipal Airport and Sylvania Airport. Milwaukee's General Mitchell International Airport is located 15 miles to the north and Chicago's O'Hare International Airport is located 60 miles to the south.

Seaport: The Port of Milwaukee is located 20 miles to the north.

Rail: On-site railway service is not available. Area rail service is provided by Canadian National Railway, Canadian Pacific Railway and Union Pacific Railroad. Rail passenger service is provided by Amtrak.



Public Services and Utilities

Sanitary Sewer and Public Water: Caledonia western Utility District 262-835-7765.

Electric Power, Natural Gas: WE Energies 800-242-9137.

Telephone Service: Service available by various carriers.

Solid Waste: Pickup and disposal by private contractors.

Contact Information

Racine County Economic Development Corporation

2320 Renaissance Boulevard, Sturtevant, WI 53177 USA

Phone: 262-898-7400 **FAX:** 262-898-7401

E-mail: rcedc@racinecountyedc.org

WEB: www.racinecountyedc.org

